

CERTIFICATE OF LOCATION OF GOVERNMENT CORNER

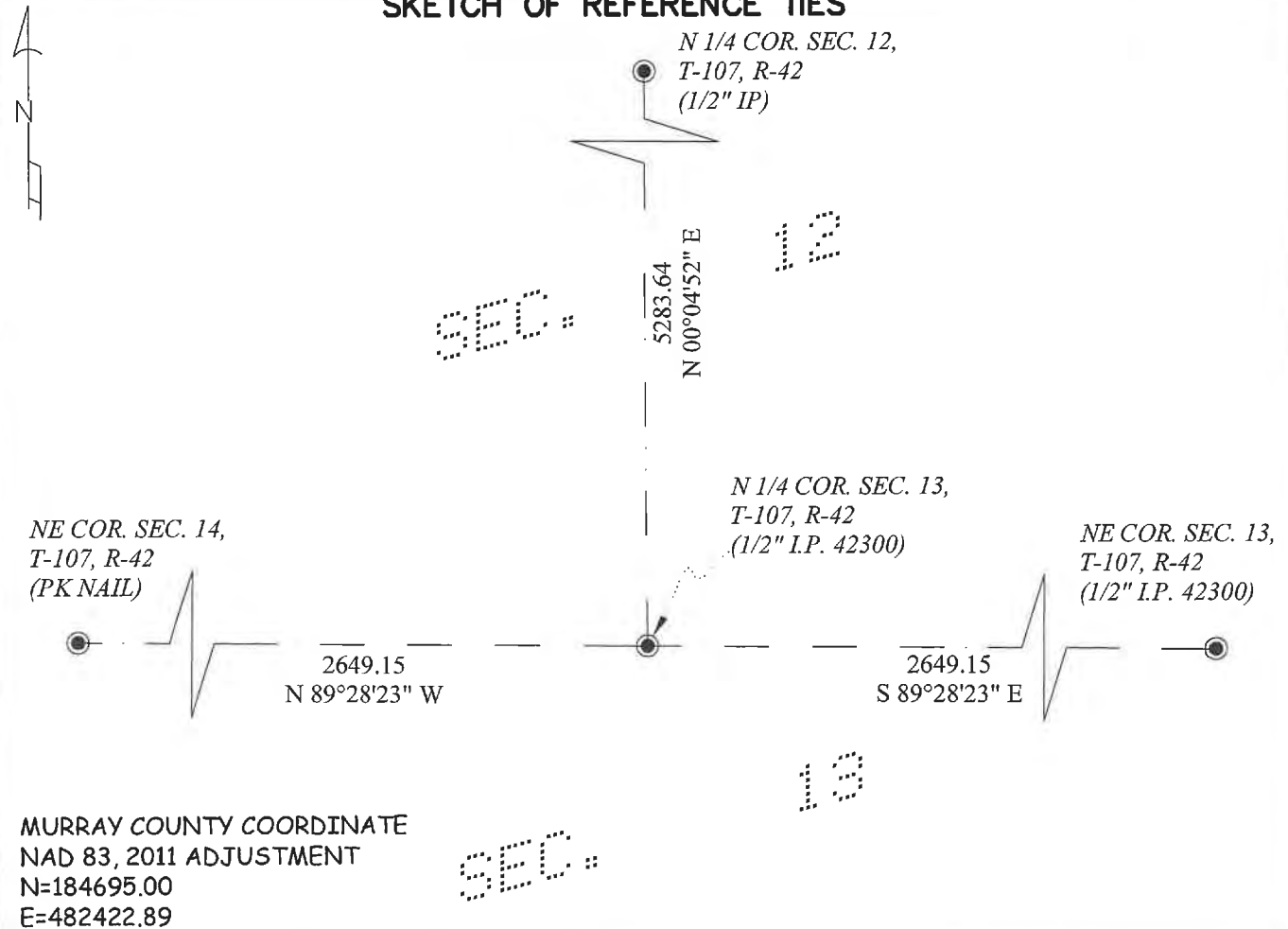
NORTH QUARTER Corner of Section 13, Township 107, Range 42, 5TH P.M.

STATE OF MINNESOTA, County of MURRAY

At the corner location shown on the sketch:

- On _____ found a _____
Date _____
- left monument as found, lowered monument, removed monument (explain)
- On 7-21-2021 placed a 1/2" Iron Pipe, with Cap #42300
Date _____

SKETCH OF REFERENCE TIES



Statement of evidence relative to this corner location is on back of page.

I hereby certify that this document and the data contained herein was prepared by me or under my direct supervision.

[Signature] 08-12-2021
Signature Date

Registration No. 42300

- Land Surveyor Professional Engineer
- County Surveyor County Engineer

OFFICE OF THE COUNTY RECORDER

County of MURRAY

I hereby certify that this document was filed in the County Recorders office at _____ o'clock ____ M. on the AUG 16 day of 2021, 20__.

County Recorder [Signature]

Documnet Number _____

Statement of Evidence:

North Quarter Corner of Section 13, Township 107, Range 42, Murray County, Minnesota.

September 1861- The original government survey was performed by L.G.M. Fletcher. An over all distance of 80.16 chains is shown on the plat.

July 21, 2021 - O'Malley & Kron Land Surveyors, Inc. performed a survey in Section 12. The Murray County Survey website was searched for information on the location of the corner and non was found. The location of the corner was computed on line and equal distance between the Northeast corner of Section 14 and the Northeast corner of Section 13. The computed position lands at the intersection of a field line going East and West and a field line going South. The position was accepted as the corner. A new monument was placed and new ties made.